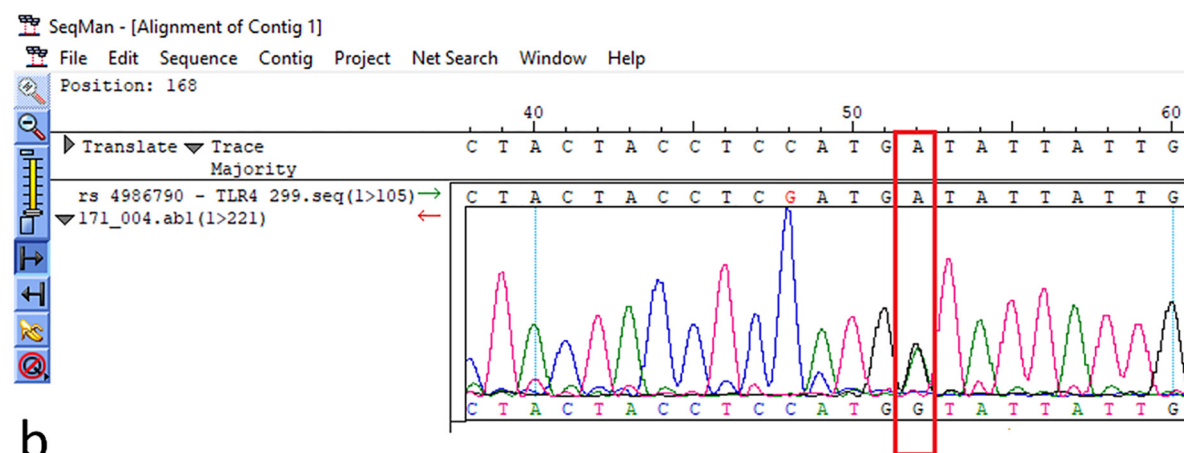
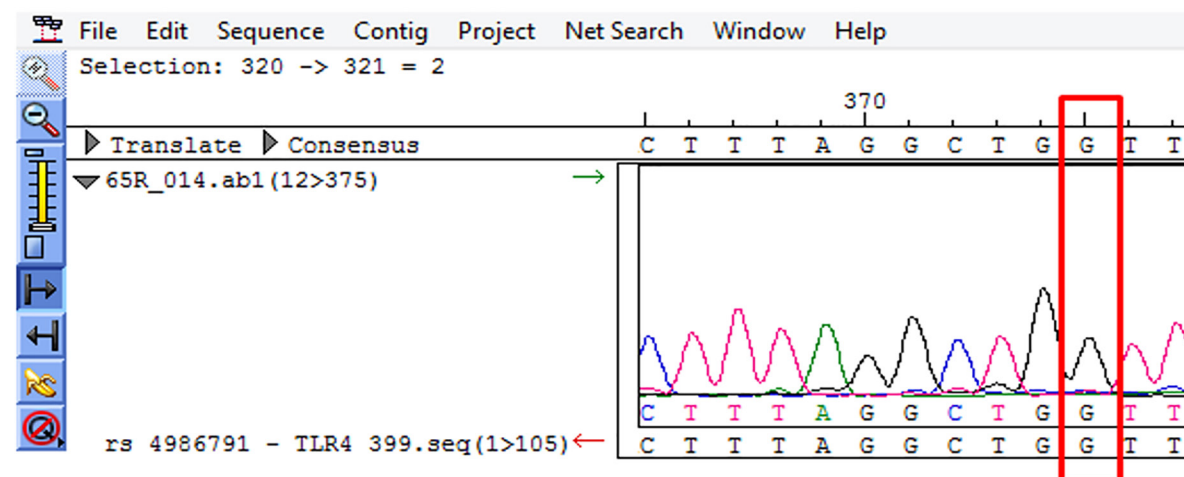


a

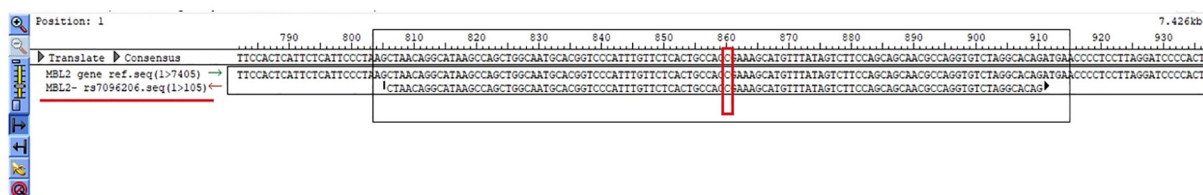


b

**Figure S1:** The figure shows *TLR2* rs4986790 genotypes in the context of preterm labor vs. normal labor. a) Homozygous AA genotype (preterm labor). b) Heterozygous AG genotype (normal labor).



**Figure S2:** The figure shows *TLR3* 399 rs4986791 homozygous GG genotype, which observed in all examined women.



**Figure S3:** The figure presents the distribution of *MBL2* rs7096206 genotypes in the examined women.